



## Wireless Setup Guide WEP

Windows XP SP2 Pro & Home edition

### Getting started

To use the Richmond's wireless network you will first have to register yourself and your laptop. You do this online shown in the URL below. On these pages are our terms and conditions for using the network and instructions in how to complete the registration form.

<http://www.richmond.ac.uk/resources/itav/resnet/index.asp>

Please allow up to 24 hours the the registration to be processed.

### Hardware requirements

You will need a Laptop running either Windows XP 32bit /64bit Professional edition or Windows XP Home edition. The laptop will need a Wireless network card which complies with the Wi-Fi (IEEE 8.02.11 b/g) standard for wireless networks operating in the 2.4 GHz spectrum with a bandwidth of 11/54 Mbps (megabits per second). This is the most prevalent wireless standard so if your laptop has buildt-in wireless, it is likely to be compliant.

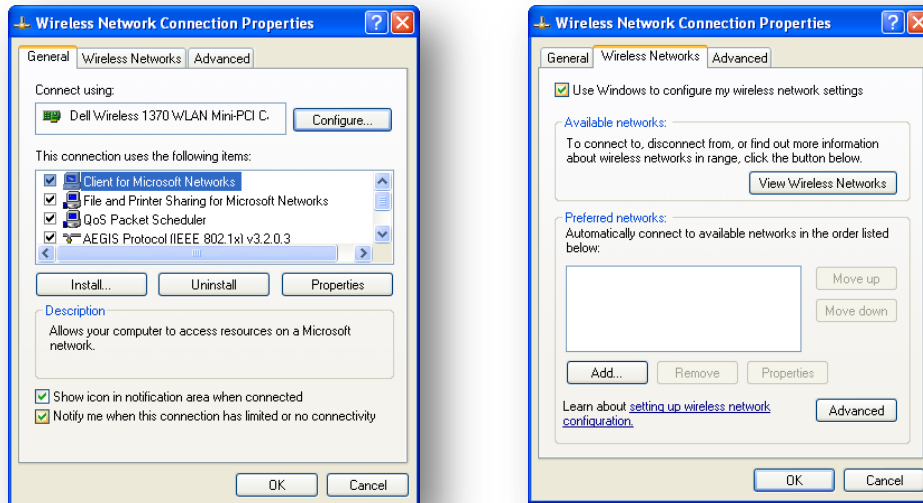
If you are buying a new card, install in accordance with the instructions supplied by the manufacturer. Most cards are supplied with a CD containing a setup program which installs the correct device driver for your operating system and a configuration utility or other software that enhances the cards functionality.

### Quick start for Windows XP

This method of setting up will only work if windows is managing you network card. If your network card cannot be managed by windows, please check with the manufacture of the card on how to connect to secure WAP networks.

First ensure that your wireless connection is set to detect wireless networks settings automatically:

- Open **Network Connections**, right-click on the wireless connection icon and then click on Properties.
- Check the check box on the General tab, labelled Show icon in **notification area when connected**
- Check the box on the **Wireless Networks** tab marked **Use Windows to configure my wireless network settings.**



- To add the network click onto the **Add** button.
- The network name (SSID) is **richcollwire**. Change the Network Authentication to **WEP**.
- The Network key is **2468024680**. Shown below on Fig.1.3
- Then just click **OK** to exit and save settings.

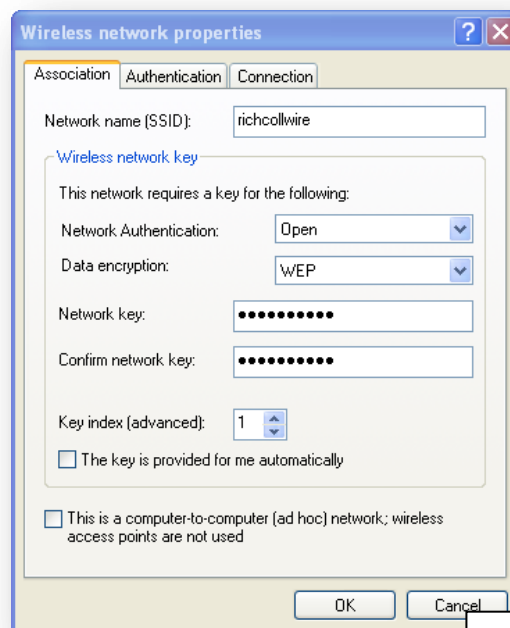


Fig1.3



After a few minutes the laptop will automatically connect to the wireless network if the network is in range.

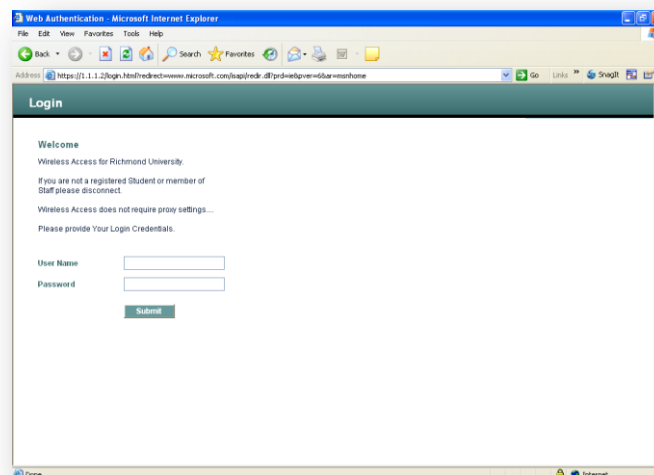
- If it does not connect automatically, right click the wireless icon in your systems tray and choose view wireless connections and click on **richcollwire**. Then push the **Connect** button.
- Now if you open your web browser it will ask you if you want to accept a certificate. Click on **Yes**.



On your screen now you should have a login page asking for your network login details.

Username: **Student ID**

Password: **Richmond network login password**



If you have problems connecting to the wireless network please go and see a RCC within their opening times or you can email [resnet@richmond.ac.uk](mailto:resnet@richmond.ac.uk)