



## Wireless Setup Guide WEP

Apple Macintosh OS X 10.x

### Getting started

To use the Richmond's wireless network you will first have to register yourself and your laptop. You do this online shown in the URL below. On these pages are our terms and conditions for using the network and instructions in how to complete the registration form.

<http://www.richmond.ac.uk/resources/itav/resnet/index.asp>

Please allow up to 24 hours the the registration to be processed.

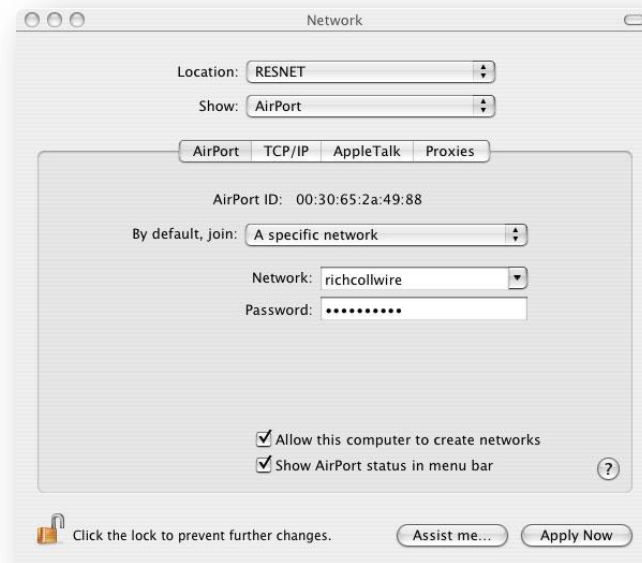
### Hardware requirements

You will need a Laptop running OS X 10.x or greater and has a built-in airport card.

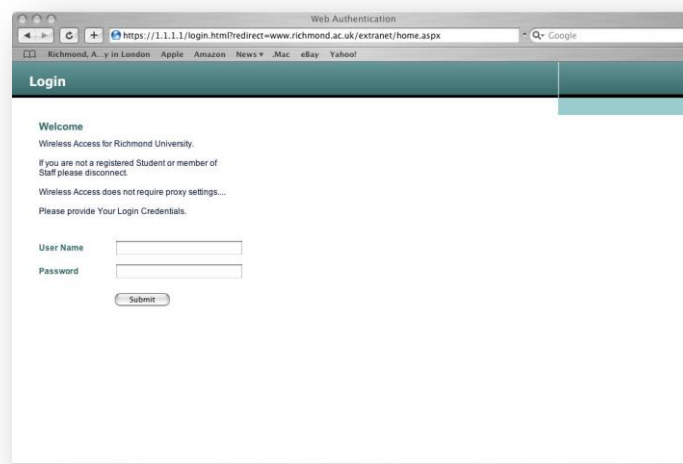
- To start please click the Apple icon on the top left hand of the screen. When the drop down menu appears navigate to '**System Preferences**'.



Under the heading **Internet & Network** there's an icon call '**Network**'. Click on this icon and this will open up the network settings.



- Make sure the show window box is displaying **AirPort**.
- The network name is **richcollwire** and the password is **2468024680**
- Once you have applied your new settings and you are connected to the network open up Safari.
- If connected correctly it should pop up with our certificate. Just click **Continue** to accept.





- Your Username is your student ID e.g.: 'M999999' and your password is your Richmond login password.

Once logged in a pop-up window will appear telling you that your login was successful with a link to logout once you are finished using the wireless network.



If you have problems connecting to the wireless network please go and see a RCC within their opening times or you can email [resnet@richmond.ac.uk](mailto:resnet@richmond.ac.uk)